

Hiring the Jazz & Pop student band

If you are unable to arrange your own accompaniment for your audition, we offer the possibility to hire Jazz & Pop students to play with you.

A few key points:

- Hiring the student band is only possible when doing an in-person entrance exam at ArtEZ.
- The student band consists of a pianist, a bass player, and a drummer (unless you are auditioning for one of these instruments yourself).
- The fee for hiring the band is €20 per band member, so €60 total.
- The band consists of experienced Jazz & Pop students, and you will have the opportunity for a short warm up with them before your audition (approx. 15 minutes). It is not possible to contact the students directly or rehearse with them.
- You pay the fee at the education office prior to your audition*. Have the **exact** amount in cash, as we may not have change. Paying digitally or by card is not possible.

**If you do not pay your musicians, ArtEZ reserves the right to cancel your audition.*

Changes / cancelling band

Notify us as soon as possible – but at least 3 weeks prior to your audition – if your need for hiring the band changes by sending an e-mail to conservatorium.arnhem@artez.nl.

When cancelling the band later than 1 week prior to your audition you will be asked to pay the hiring fee whether you play with them or not, as our students have reserved this time for you.

Original pieces

If you want to perform original (self-written) pieces when playing with the student band, be aware of the following:

- The total prep time with the student band is short (around 15 minutes), and this includes introductions, setting up, and instruction time; leaving little to no actual rehearsal time.
- You may accompany yourself for one piece/play one piece in a solo setting. The other pieces of your set list must be performed with the band.
- If the sheet music is not clear, if a piece is too complex, or if the piece is not suitable to be played with just piano, drums and bass as accompaniment, it might not work well for your audition.

Sheet music

Send in sheet music for your chosen 5 pieces to conservatorium.arnhem@artez.nl as soon as possible but no later than **two working weeks** prior to your audition.

You will not be reminded; it is your own responsibility to send in the sheet music in time. If you do not, the musicians cannot prepare the pieces properly.

Bring printed sheet music of all pieces of your admission programme for all musicians on the day of your audition.

Your sheet music must meet the following criteria:

- Has the melody and chords on one page and fits on a single page (real book format)
- Must be a PDF
- Must be clear and easy to read
- If applicable: has notations of tempo and additional instructions at the top
- Is already in the right key

See the next pages for examples of clear sheet music.

Blue Bossa

Kenny Dorham

d = 79 ~~8~~ C-7 Medium Bossa

d = 79  **C-7** *Medium Bossa* **F-7** **Bb7**


5 

9

Play head twice
after solos, D.S. al Coda

17

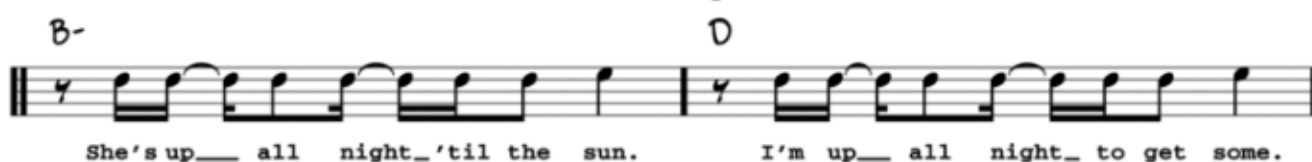
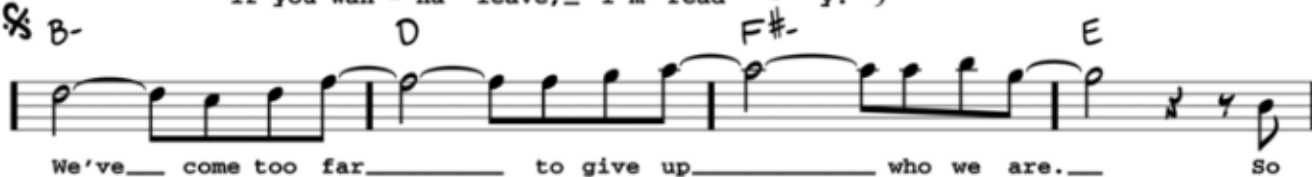
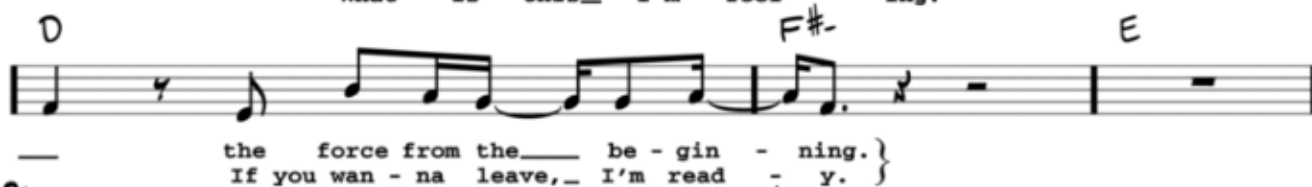
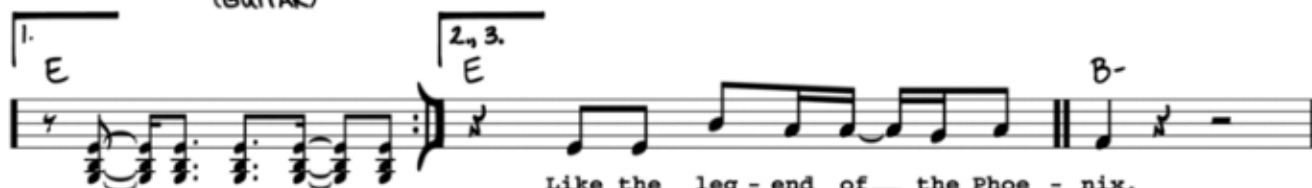
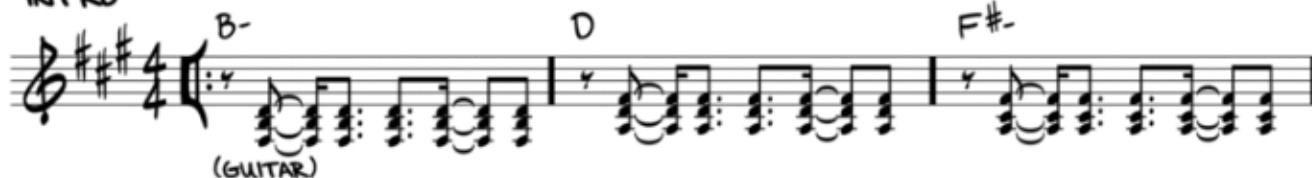
21 

(MED. DISCO)

GET LUCKY

- THOMAS BANGALTER/GUY MANUEL HOMEM CHRISTO/
NILE RODGERS/PHARRELL WILLIAMS

INTRO



Copyright © 2013 Concord Copyrights, XLC Music, EMI April Music Inc. and More Water From Nazareth
All Rights for Concord Copyrights Administered by Concord Music Publishing
All Rights for XLC Music, EMI April Music Inc. and More Water From Nazareth Administered by Sony/ATV Music Publishing LLC,
424 Church Street, Suite 1200, Nashville, TN 37219

- MILES DAVIS

Handwritten musical score for "The Sound of Silence" by Simon & Garfunkel. The score is written on four systems of staves. The first system is labeled 'A' and the second system is labeled 'B'. The key signature is G major (one sharp) and the time signature is 4/4. The score includes guitar chords and a bass line. The first system (A) has a guitar part with chords N.C., F#-7(add4), E-7(add4), and N.C., and a bass line labeled '(BASS LINE 8VA)'. The second system (B) has a guitar part with chords N.C., F#-7(add4), E-7(add4), and N.C., and a bass line. The third system has a guitar part with chords N.C., F#-7(add4), E-7(add4), and N.C., and a bass line. The fourth system has a guitar part with chords N.C., G-7(add4), F-7(add4), and N.C., and a bass line. The score is written in a handwritten style with some corrections and annotations.