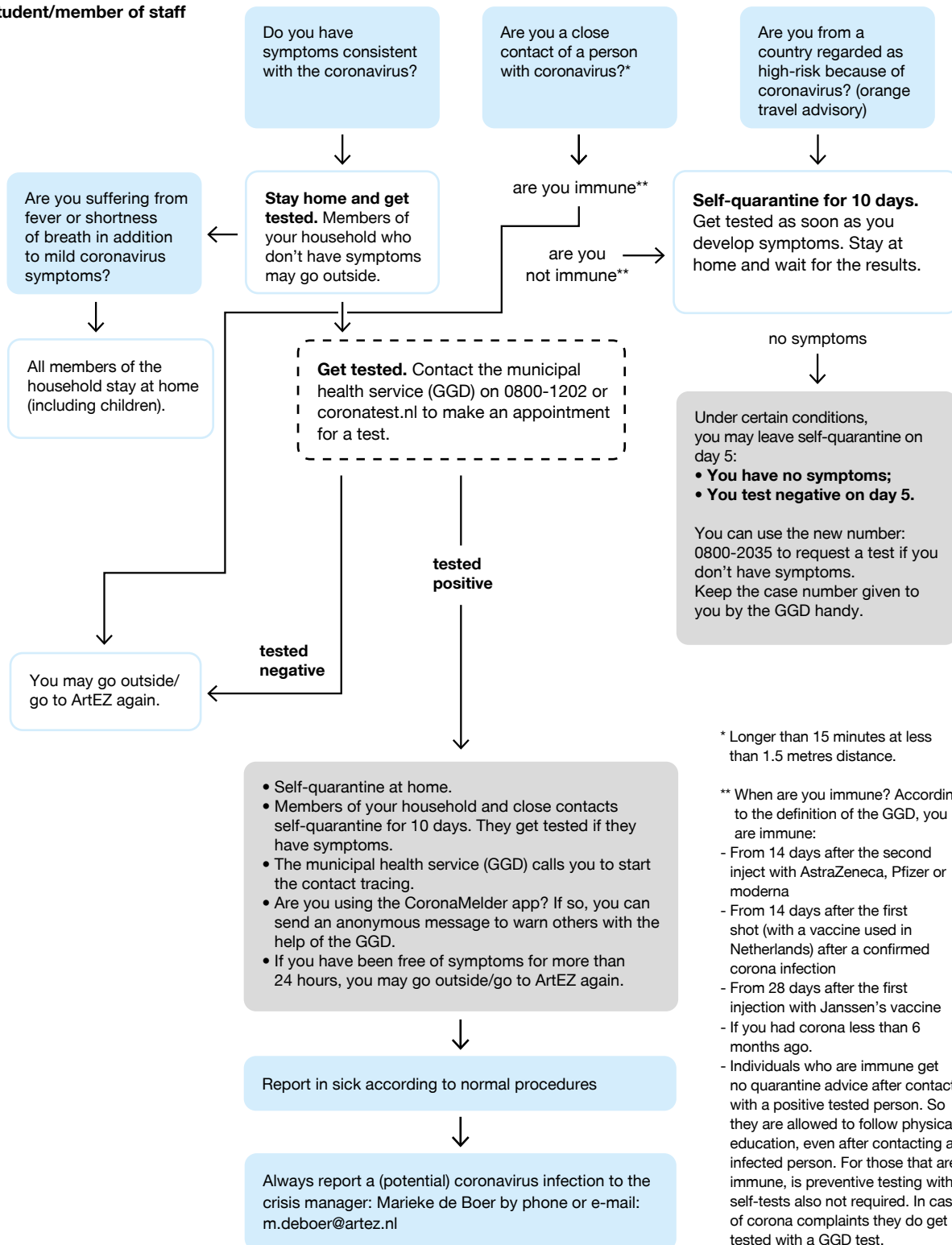


## Coronavirus action framework

### Student/member of staff



\* Longer than 15 minutes at less than 1.5 metres distance.

\*\* When are you immune? According to the definition of the GGD, you are immune:

- From 14 days after the second inject with AstraZeneca, Pfizer or moderna
- From 14 days after the first shot (with a vaccine used in Netherlands) after a confirmed corona infection
- From 28 days after the first injection with Janssen's vaccine
- If you had corona less than 6 months ago.
- Individuals who are immune get no quarantine advice after contact with a positive tested person. So they are allowed to follow physical education, even after contacting an infected person. For those that are immune, is preventive testing with self-tests also not required. In case of corona complaints they do get tested with a GGD test.

### Please note:

Always contact the director and the crisis manager. Crisis Manager:  
Records case and coordinates with GGD. Informs CMT and scales up if necessary.